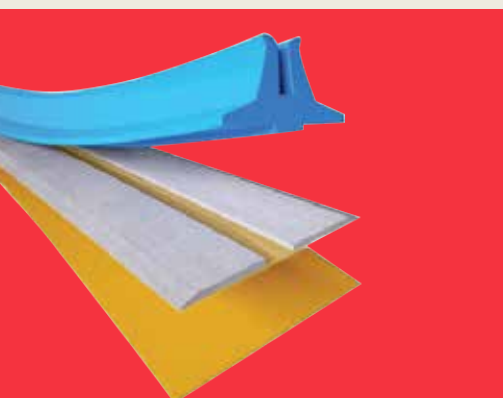
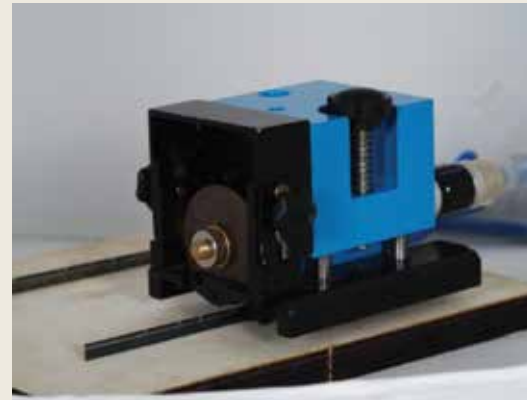

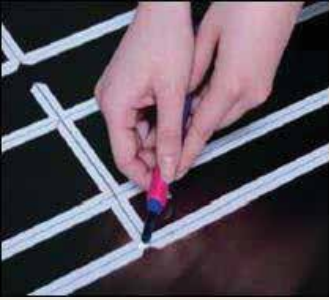


Die cutting solutions



**Laser Die Making
Creasing Matrix
Eva Foam
Injection Rubber
Steel Shim tape
Paper Patching Tape
Cutting Rule
Creasing Rule
Die Punch Bit
Paper Drill Bit
Nick Grinder
Jigging Saw Blades**

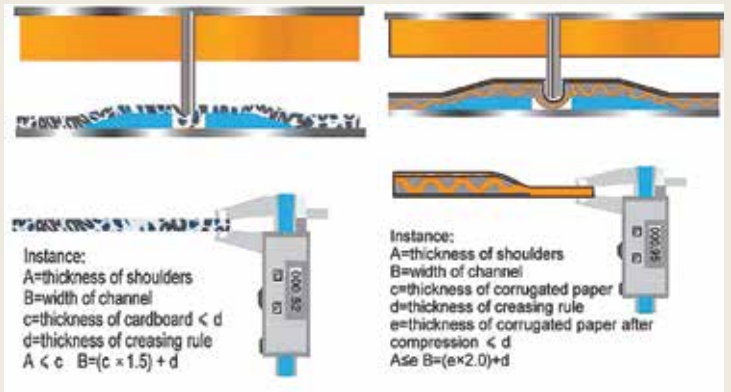


	Series	Plastic based Creasing Matrix(white/yellow/orange)
	Type	Standard/Narrow/Off-center/Double
	Material	PVC base with plastic shoulder
	Punching Time	10,000-30,000 times
	Application	Developed for small and medium print runs
	Packing	70cm/pc,50pcs/box,10boxes/carton
	Storage Period	2 years
	Notes	Matrix in rolls is available upon demands

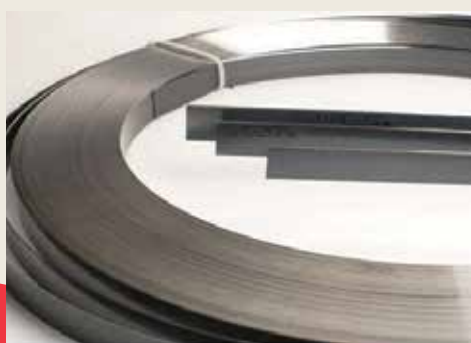
How to Use :

1. Measure the length of the creasing rule
2. Mark the measurement and cut the matrix
3. Mount the cutting piece into the creasing rule with locator
4. Remove all of the backing tapes
5. Transfer the matrix to the die cutting steel plate
6. Remove all of the locators
7. Miter the sharp angle

Calculation Formula



according to calculation formula: A=0.52=0.5(mm); B=0.52 x 1.5 + 0.71 = 1.49 = 1.5(mm),so we should choose the size of 0.5 x 1.5.



Specimens

1

TMB 0.3x0.8 mm (12mm)

2

TMB 0.3x1.2 mm (12mm)

3

TMB 0.4x0.8 mm (12mm)

4

TMB 0.4x1.2 mm (12mm)

5

TMB 0.4x1.3 mm (12mm)

6

TMB 0.4x1.5 mm (12mm)

7

TMB 0.5x1.5 mm (12mm)

8

TMB 0.5x1.7 mm (12mm)

9

TMB 0.6x2.5 mm (12mm)

10

TMB 0.8x2.5 mm (12mm)

11

TMB 0.8x2.7 mm (12mm)

12

TMB 0.8x3.0 mm (12mm)

13

TMB 0.8x3.5 mm (12mm)

14

TMB 1.0x3.0mm (12mm)

15

TMB 1.0x3.2 mm (12mm)

16

Green High Elasticity Injection Rubber

60° Green High Elasticity - 10x300x380mm x 20/Box

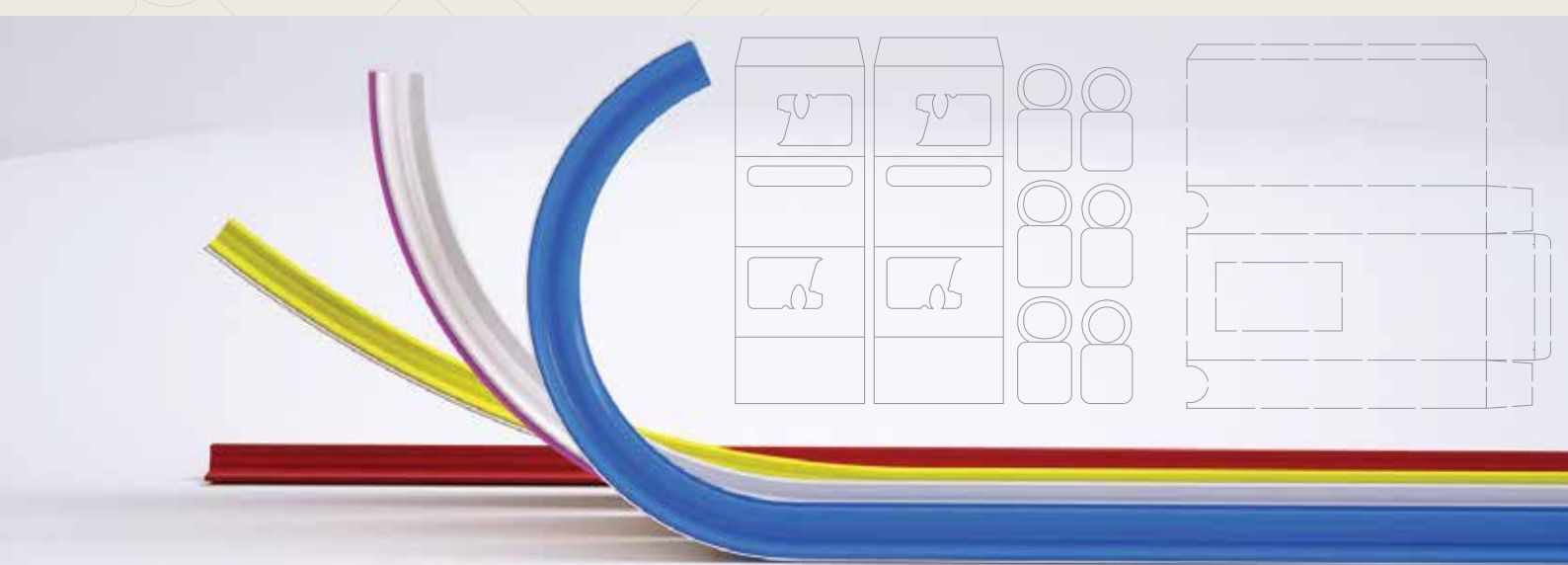
17

White High Elasticity Injection Rubber

40° White High Elasticity - 10x300x380mm x 20/Box

Features:

1. World's most advanced creasing matrix made from plastic, pressboard and fibre and resin for various die cutting jobs.
2. Accurate locator – ensures perfect registration
3. Low profile chamfer – board flows freely over the matrix; board marking is reduced
4. Finger lift adhesive tape – backing paper easily and quickly removed
5. New and strong adhesive removes cleanly from the plate after use, will not move about during die cutting jobs
6. Special sizes available to suit all board types, off-centers and multi-crease for close creasing rule
7. It is extremely durable and accurate and provides benefits in time and cost.



 **تریدمکس**
rademax

P.O. Box: 30706 | Doha - Qatar | Tel: 4450 9414 | Fax: 44509414

Email: info@trademaxqa.com, Web: www.trademaxqa.com

Laser Die Making | Creasing Matrix | Eva Foam | Injection Rubber | Steel Shim tape | Paper Patching Tape
Cutting Rule | Creasing Rule | Die Punch Bit | Paper Drill Bit | Nick Grinder | Jigging Saw Blades